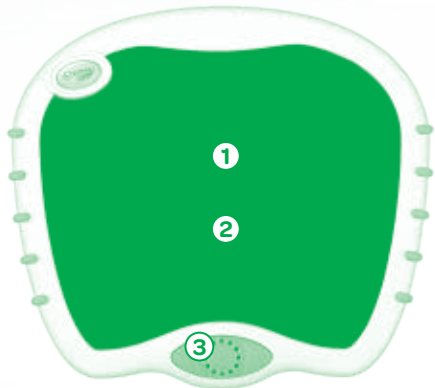




Mess-Free Touch-Lights®



- ① Sealed Gel Surface
Surface de gel scellée
Superficie de gel sellada
- ② Light
Lumière
Luz
- ③ Effects Button
Boutons d'effets spéciaux
Botón de efectos especiales

Base (Front) • Base (Avant) • Base (frente)



- ④ Battery Cover
Couvercle du compartiment des piles
Cubierta de pilas
- ⑤ Hand Grips
Poignées
Agarraderas
- ⑥ 3-Way Switch
Interrupteur trifonctionnel
Interruptor de 3 posiciones

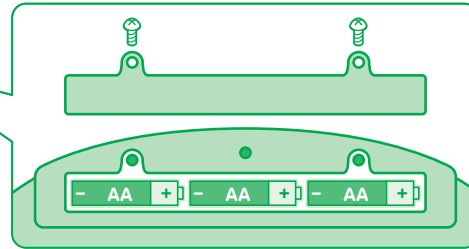
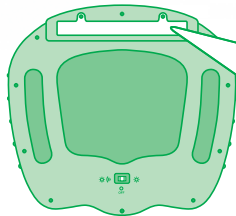
Base (Back) • Base (Arrière) • Base (dorso)

Insert Batteries:

CAUTION: BATTERIES MUST BE INSTALLED BY AN ADULT ONLY.
We recommend using non-rechargeable batteries.

Also Needed (not included): 3 AA Alkaline Batteries, Phillips Screwdriver

- 1) Use Phillips screwdriver to loosen battery cover screws underneath the base. (Remove any used batteries and dispose of properly.)
- 2) Insert three (3) AA alkaline batteries. Ensure that direction matches diagram inside battery case.
- 3) Replace battery cover & tighten the screws.



Battery Saver

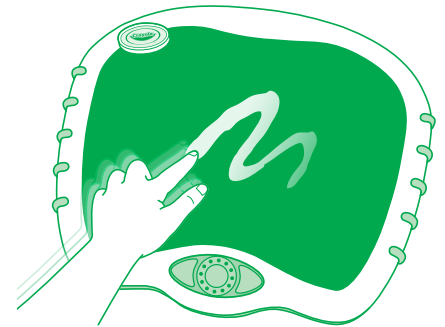
The Touch-Lights unit will go into "sleep mode" if switch is "On" and not used for 5 minutes. To reactivate light & music, simply press the green button.

For Best Results:

- Mix the gel before use: rub your hands over the surface to ensure a uniform, squishy texture.
- Switch on Lights & Music Mode for even more fun.
- Have fun together! Show & tell your toddler how to:
 - press designs into the gel with the tip of a finger.
 - press the big green button to change the color and song.
- For easy cleanup, wipe base with a damp cloth.
Do not immerse in water.
- Dry thoroughly before storing.



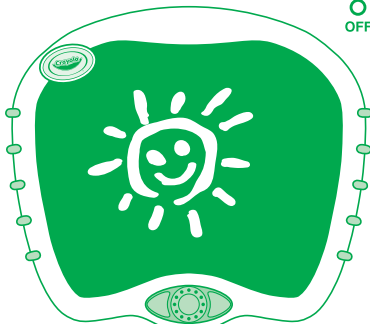
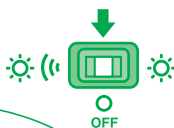
1) Mix the Gel: Before your first use or as needed, rub your hands across the surface until all the gel is mixed & smooth.



2) Show & Tell: Press down firmly with fingertip to move the gel & make a design.

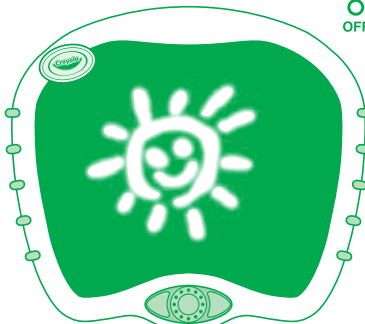
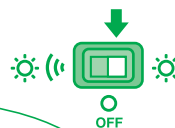
Choose Play Mode & Effects: Turn the base over and set the switch position for the effects desired.

A) Switch Position (Off):
Anytime Mode



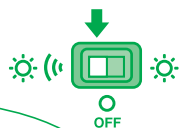
Mess-free doodling without lights or music using fingertip.

B) Switch Position (On):
Lights Only Mode



Push green button to change color. See what happens each time!

C) Switch Position (On):
Lights & Music Mode



Push green button to change color & tune. See & hear what happens each time!